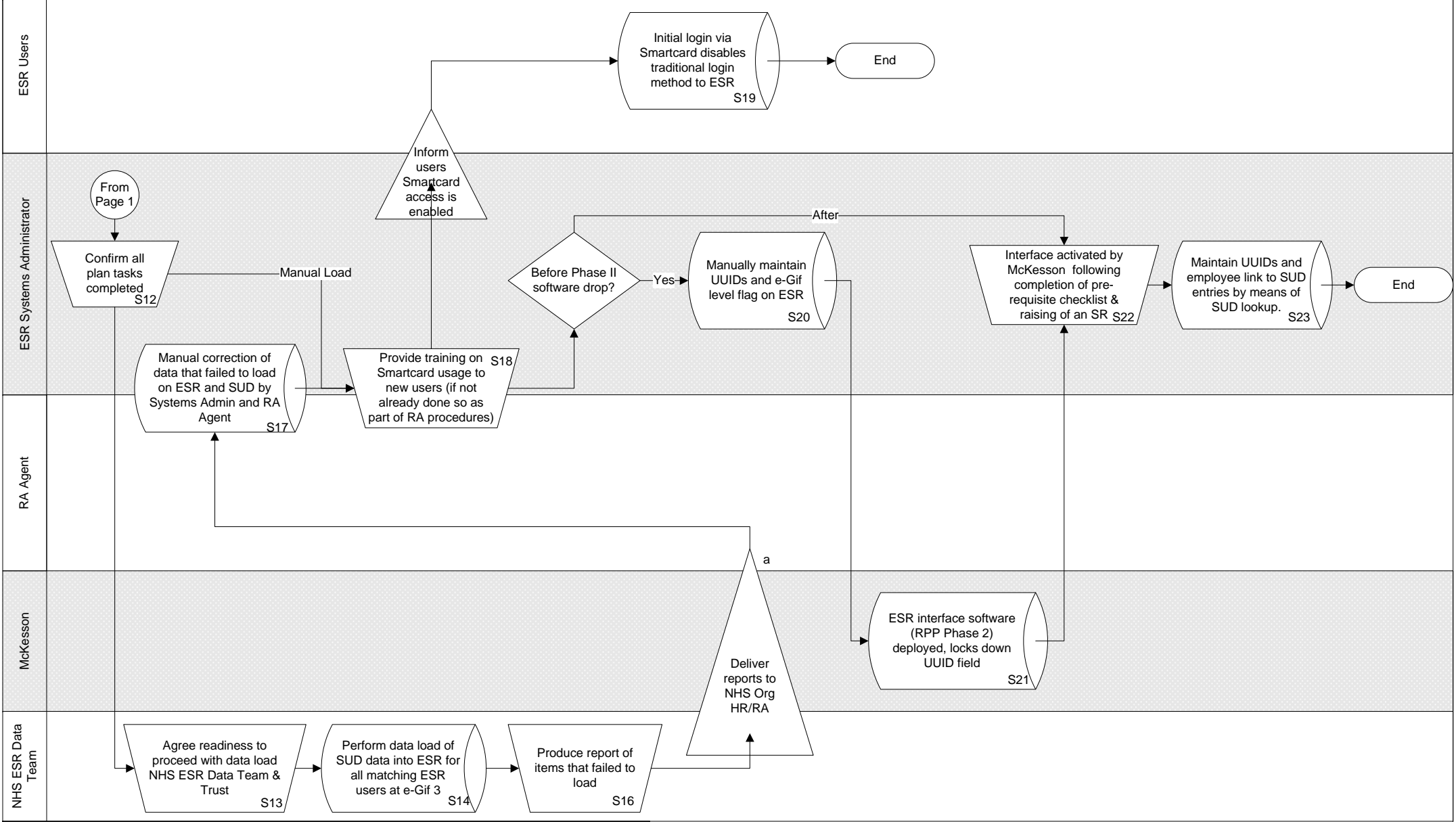


Footnotes

a. Determine if Match/Cleanse/Load by NHS Data Team is required based on number of ESR users (e.g. use of manual load where there are only a small number), and skills / capacity to key in UIIDs into ESR
 b. All ESR users should be covered by this (except for elearning remote access)
 c. Trust to have previously given permissions for extract (S1.1). BT provide weekly extract based on list of NACS codes supplied by NHS ESR data team for organisations who given permission to extract data.
 d. This will be part of standard procedure and role of the RA team - usually there is an adequate stock of both cards and readers.
 e. These are standard RA procedures documented by NHS CFH and used in day to day operation by RA agents in NHS organisations

f. Agreement between NHS Data Team and Trust RA / Systems Admin that manual migration of errors is within acceptable limits
 g. Must be done via an NHS.net account for security so this must be set up in advance by NHS organisations
 h. Prior to Phase 2 done manually by entering UIID against each employee record, after Phase 2 using interface to select & link SUD entry



Footnotes
 a. Must be done via an NHS.net account for security so this must be set up in advance by NHS organisations